

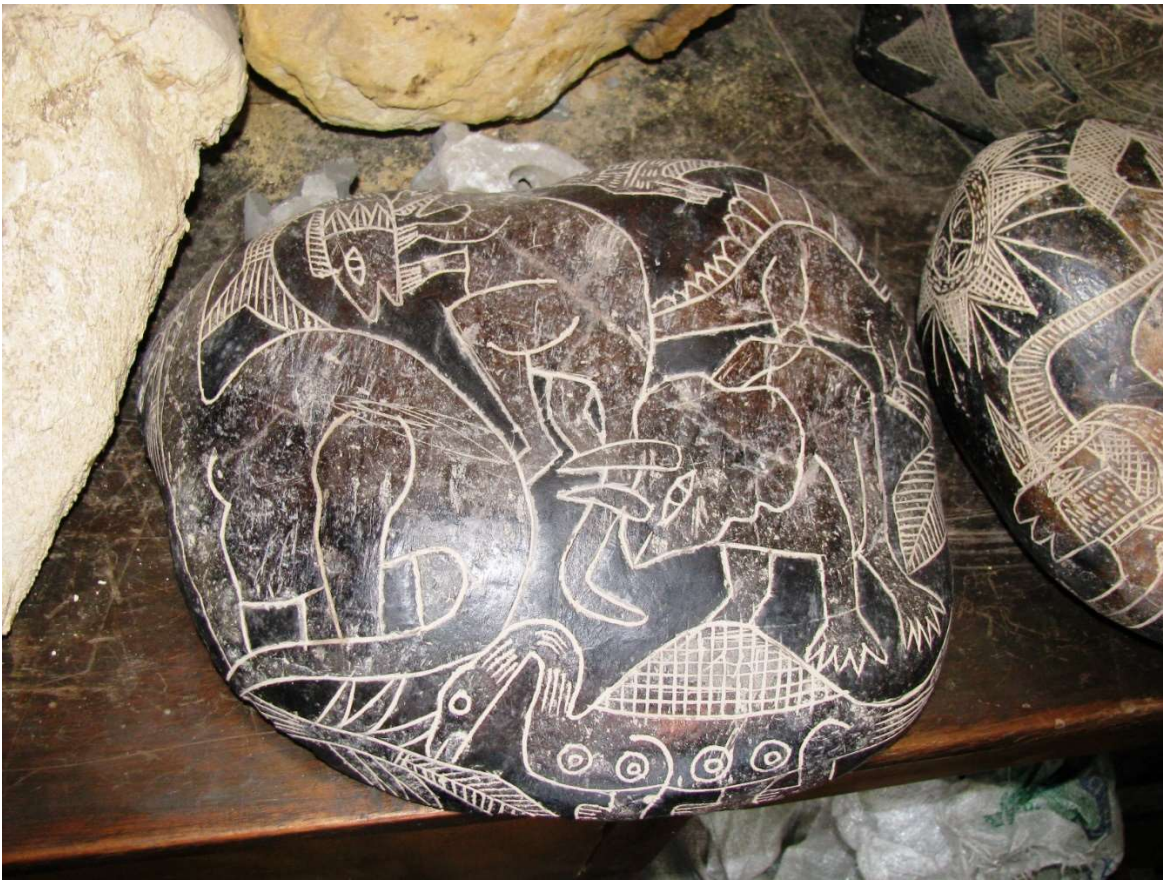
Ica (Peru) Burial Stone



Triceratops



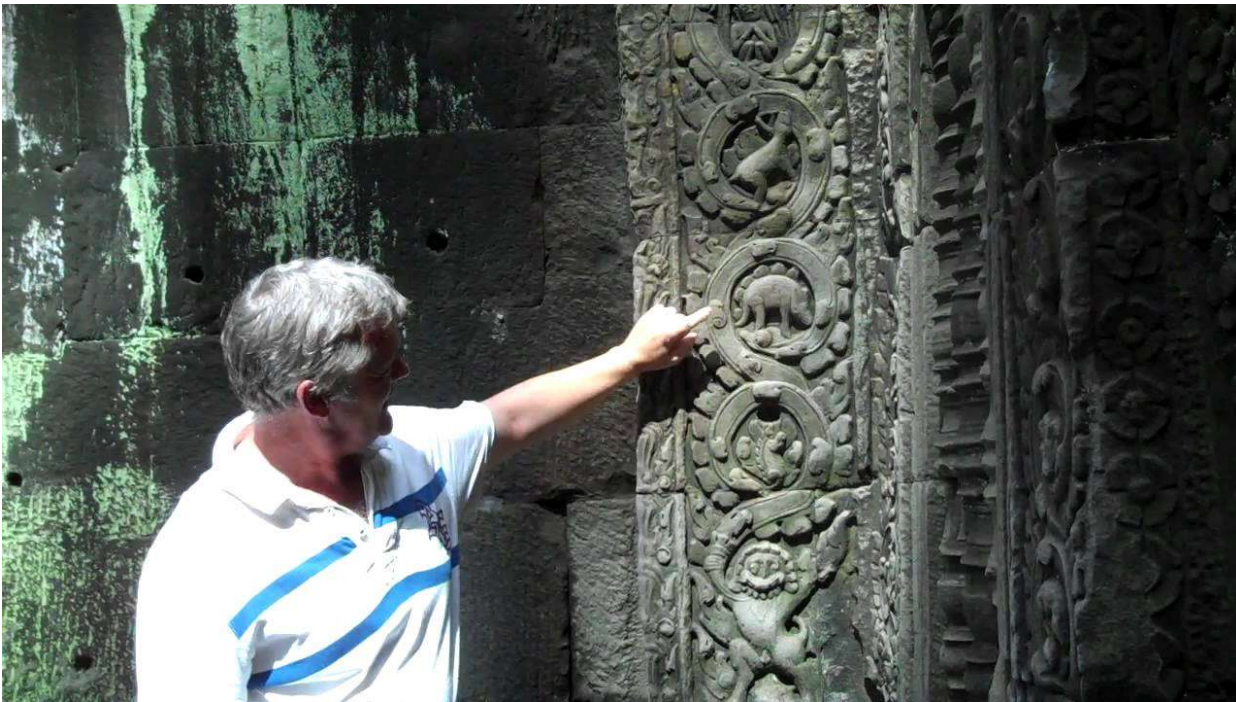
Man riding a Triceratops smoking a pipe



Sauropods, Triceratops, Stegosaurus and other creatures



Center picture:
T-Rex having a
man by his neck



Temple monastery Ta Prohm, Cambodia dedicated in 1186

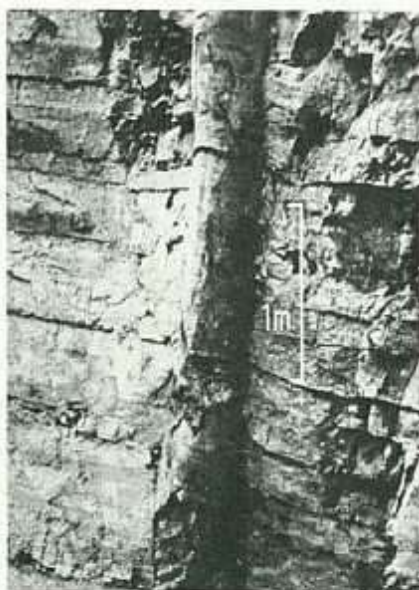


Polysrate fossils



In Germany, France, the British Isles, Nova Scotia, California, and several eastern states, fossils that extend through several layers of sedimentary rock have been found. These are called **polystrate*** (PAHL ee STRATE) fossils. They are usually tree trunks in an upright or somewhat slanted position. Polystrate fossils furnish clear-cut evidence that sediment was deposited rapidly, as in a flood. If the rock layers surrounding the fossils had formed at the slow rate that evolutionists assumed as they constructed the geologic time scale, the trees would have decayed or fallen rather than fossilized.

One type of polystrate fossil in California is especially interesting. Near Santa Barbara, fish fossils extend through several layers of algae fossils. Evolutionists calculate that each algae layer took hundreds or thousands of years to form. That would mean that the head and tail of the same fish were buried several thousands of years apart! Clearly the beds must have formed rapidly around the fish, not slowly. The most remarkable find was a polystrate whale fossil extending through many layers and many thousand



15B-17 Polystrate tree trunk near Essen-Kupferdreh, Germany; the overall height of the tree trunk is approximately 7.6 m.



Petrified cowboy leg found in a dry creek bed near the West Texas town of Iraan, about 1980 by Mr. Jerry Stone, an employee of Corvete oil company. The bones of the partial leg and foot within the boot were revealed by an elaborate set of **C.T. Scans performed at Harris Methodist Hospital in Bedford, Texas on July 24, 1997.** The Radiologic Technician was Evelyn Americus, AART. A complete set of these scans remains with the boot at the Creation Evidence Museum in Glen Rose, Texas. 254-897-3200